



**BUILD THE FUTURE : INVEST IN
SOLID FOUNDATIONS**

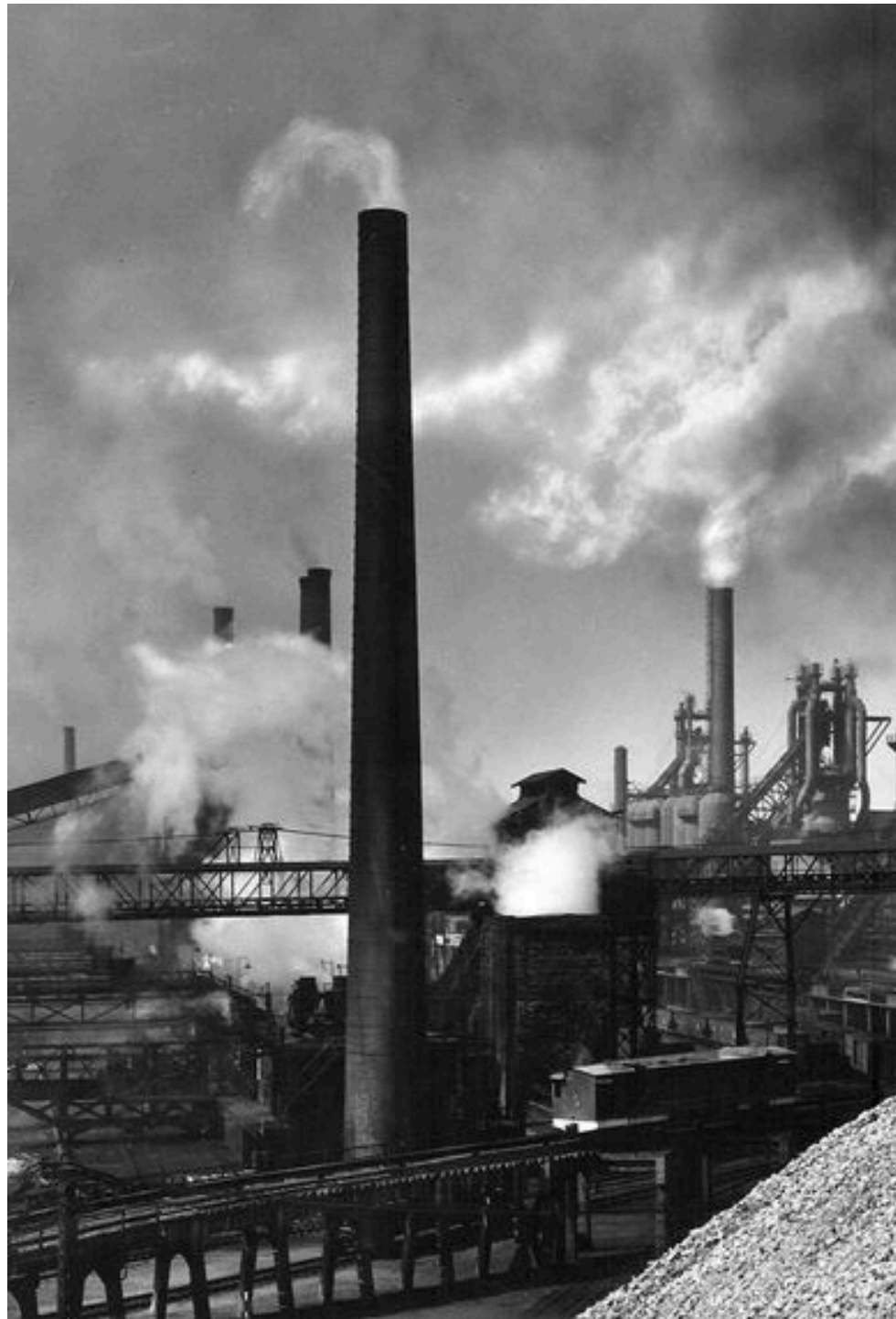


COMPANY OVERVIEW



- **INDUSTRY :** EPC (only Construction)
- **LOCATION :** Maharashtra
- **ESTABLISHMENT :** 4 decades ago
- **TRANSACTION TYPE :** 100% Acquisition
- **ORGANIZATION NATURE :** Private Limited
- **REASON OF EXIT:** Both director's, aged 70+, children have other priorities hence unable to carry on the baton.
- **ASKING PRICE :** **INR 260.00 Crores**
- **Order Book :** INR 1800 Crores (as on March 2026)

COMPANY BACKGROUND



Over 39 years, the company has excelled in construction, mechanical fabrication, and setting up sugar, refinery, cement, and power plants, establishing a strong presence in over 40 countries, including India, the Middle East, Africa, and neighboring regions. With a workforce of over 7,000 professionals, the company has completed record-breaking projects.

Their strategic expansion includes establishing plants in 21 African countries and forging partnerships with European companies to enhance their reach in the African market.

BUSINESS HIGHLIGHTS



The company's global footprint extends to Southeast Asia and neighboring countries like Nepal and Bhutan, bolstered by a strategic acquisition of a similar firm to enhance its capabilities.

Their commitment to excellence has earned enduring trust and partnerships with international industry leaders, solidifying their reputation as a preferred choice for collaborative projects and industry-leading innovation.

PLANT CONSTRUCTION EXPERTISE



RCC Silo Plant



Sugar Plant



Boiler Plant



Power Plant



BOP for Mega Power Plant



360 COMPANY BECHO PVT. LTD.

Exclusive Mandate Holder for the Deal

✉ response@companybecho.com

🌐 www.companybecho.com

☎ 9595271145 | 7972422151

📍 Office No. 106 , Sukhniwas 55 Mangalwar Peth 15 August Chowk, Pune

DISCLAIMER :The information herein is sourced from Clients and is believed to be accurate at the time of publication. However, **360 Company Becho Pvt. Ltd.** offers no warranties, implied or otherwise. Prospective purchasers or investors are advised to conduct their own due diligence to verify the information's accuracy before proceeding. Images in the presentation are only indicative.